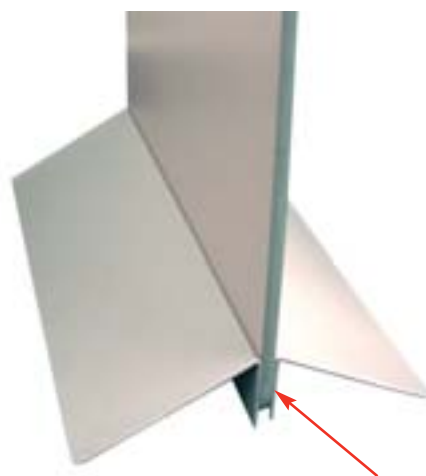


Simple cost effective rigid banner support for indoor or outdoor use.

features & benefits

- Designed to support a variety of rigid substrates from 10 to 35mm thick*
- Durable and stable
- Available in silver powdercoated finish
- Available in 300mm, 600mm and 800mm and 1000mm widths



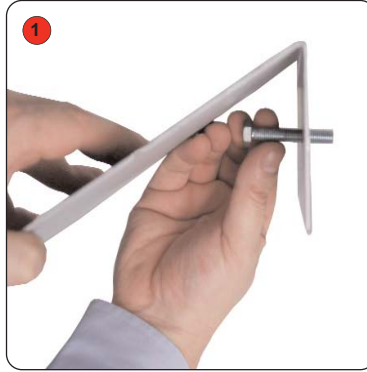
NB 85mm of the banner is not visible

hardware specifications	graphic specifications	additional info
<p>Assembled Dimensions (mm): 85 (h) x 800 (w) x 350(d)+substrate thickness (based upon 800mm unit)</p> <p>Weight (not including banner): 6kg approx (800mm unit)</p> <p>Material: Epoxy polyester powdercoated steel</p>	<p>Recommended maximum graphic height: 1800mm high using 18mm thick MDF</p> <p>Recommended banner substrate: 18mm thick MDF 85mm of the banner is not visible See diagram on page 2 for hole positioning</p>	<p>Note: Suitability tests should be undertaken for banner substrates other than 18mm MDF (height, width and depth) for each sized unit</p>

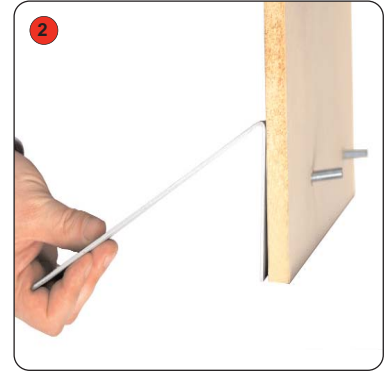
Assembly Instructions



Kit includes: 2 steel supports, M8 bolts and wing nuts



1 Feed each bolt through one of the steel supports



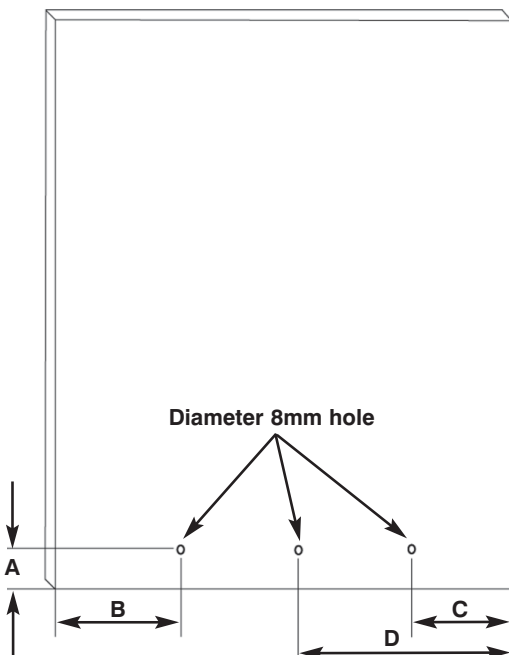
2 Feed the bolts through the rigid banner material



3 Slide the second steel support over the bolts



4 Secure the two supports together using the wing nuts



Rigid banner hole positioning

Width (mm)	A	B	C	D
300	42.5	100	100	-
600	42.5	150	150	-
800	42.5	150	150	400
1000	42.5	250	250	500

Notes:
All dimensions are in mm
Dimensions shown are to hole centres