

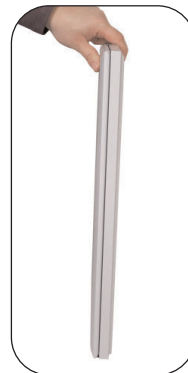
Reflecta Deluxe

Slim line illuminated lightbox with snap frame sides. The Reflecta Deluxe lightbox provides a simple and cost effective display solution.



features & benefits

- Snap frame low profile lightbox
- Available in A1, A2 and A3 sizes
- Snap frame sides enable easy change of graphics
- Complete with CCFL fluorescent tube
- Quality aluminium frame construction
- Wall fixing in portrait or landscape formats
- UPVC protective graphics covers
- CE Approved



technical information

- *CCFL fluorescent tube*
- *1500 Lumen approx light level*
- *Life time of tube 15,000 to 20,000 hours approx upon normal useage*
- *Recommended graphic material: 200 micron Duratrans or equivalent*
- *Suitable for indoor use only*

model	overall dimensions approx (mm)	graphic size approx (mm)	visible size approx (mm)	weight (approx)
ML931 (A1)	880 (h) x 664 (w) x 35 (d) 34.7" (h) x 26.1" (w) x 1.4" (d)	841 (h) x 594 (w) 33.1" (h) x 23.4" (w)	780 (h) x 564 (w) 30.7" (h) x 22.2" (w)	9 kg (19.8 lbs)
ML932 (A2)	664 (h) x 470 (w) x 35 (d) 26.1" (h) x 18.5" (w) x 1.4" (d)	594 (h) x 420 (w) 23.4" (h) x 16.5" (w)	564 (h) x 370 (w) 22.2" (h) x 14.6" (w)	4.6 kg (10.1 lbs)
ML933 (A3)	470 (h) x 366 (w) x 35 (d) 18.5" (h) x 14.4" (w) x 1.4" (d)	420 (h) x 297 (w) 16.5" (h) x 11.7" (w)	370 (h) x 266 (w) 14.6" (h) x 10.5" (w)	2.8 kg (6.2 lbs)

Assembly Instructions

Before assembling or changing graphics ensure the lightbox is disconnected from the power supply



1 Open all four snap frame sides.



2 Remove the clear protective sheet.



3 Fit the graphic into the lightbox.



4 Re-fit the protective sheet over the graphic.

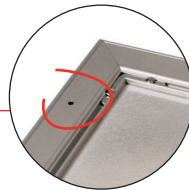
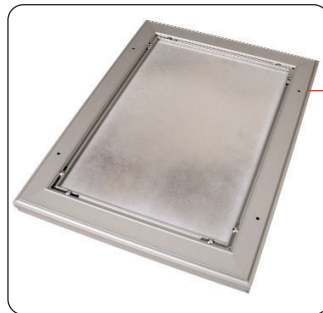


5 Close the snap frame sides to secure the graphic into place.

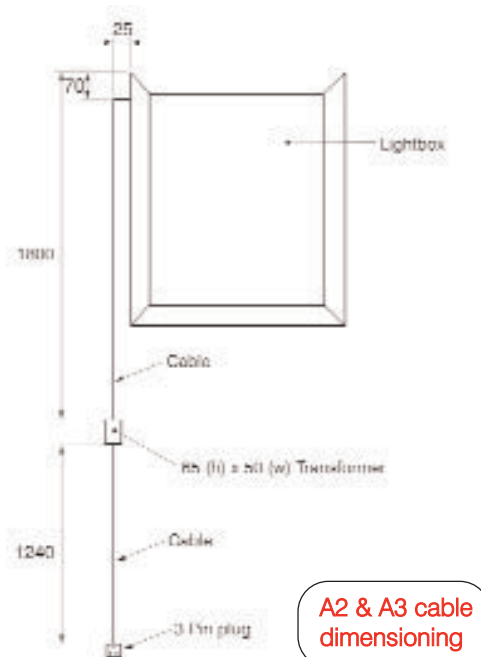
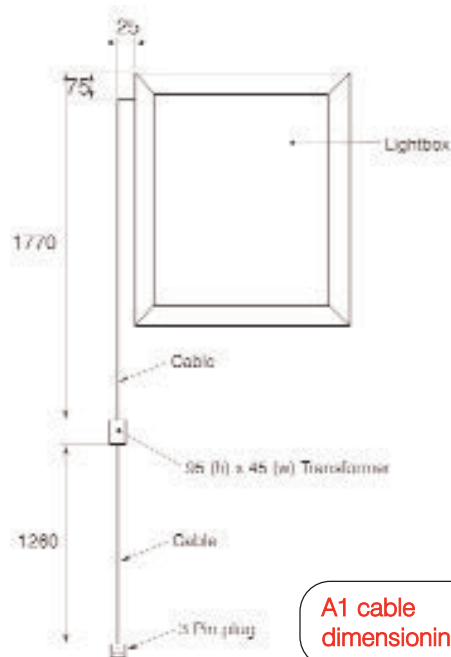


6 Attach the power supply to the lightbox .

Wall mounting



The lightbox may be mounted to walls. 4 x Dia 4mm approx holes are situated on the rear of the lightbox, secure to wall using suitable fixings (not supplied).



All dimensions are approx and are shown in mm