

Reflecta Pro

ML924*



* A4 Desktop ML924

An unusual and subtle way of creating an eye catching display. The Reflecta Pro lightbox provides you with a simple and cost effective solution.

features & benefits

- Attractively finished in clear acrylic with chrome fittings
- 3 Desktop display sizes
- Portrait or landscape formats
- Wall mountable B2 size
- Complete with power adaptor



technical information

- CCFL fluorescent tubes have an approx life expectancy of 7500 hours
- Recommended graphic material: 200 micron Duratrans
- Suitable for indoor use only

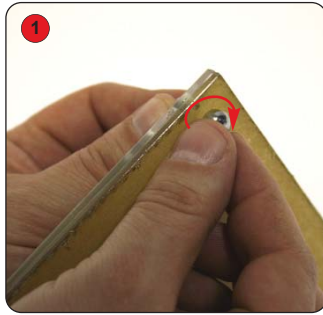
model	overall size (mm)	graphic size (mm)	visible size (mm)	weight (kg)	tube type	power supply
B6 - Desktop	190 (h) x 235 (w) x 26 (d) (61mm deep inc legs)	145 (h) x 190 (w)	125 (h) x 175 (w)	0.8 approx	CCFL 5W	6V DC
B4 - Desktop	275 (h) x 327 (w) x 28 (d) (102mm deep inc legs)	210 (h) x 260 (w)	194 (h) x 245 (w)	1.3 approx	CCFL 6W	12V DC
A4 - Desktop	290 (h) x 378 (w) x 28 (d) (102mm deep inc legs)	215 (h) x 315 (w)	200 (h) x 290 (w)	1.5 approx	CCFL 6W	12V DC
B2 - Wallmounted	590 (h) x 450 (w) x 32 (d) (35mm deep inc standoffs)	490 (h) x 350 (w)	469 (h) x 328 (w)	3.3 approx	CCFL 12W	12V DC

We are continually improving and modifying our product range and reserve the right to vary the specifications without prior notice. All dimensions and weights quoted are approximate and we accept no responsibility for variance. E&OE.

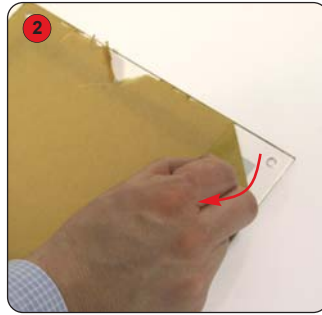
UJ149U REV 3 1 1/05

Assembly Instructions

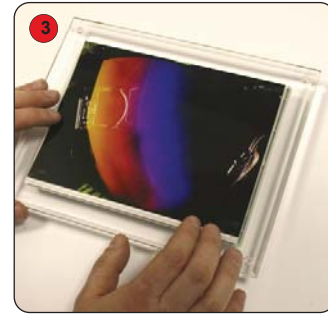
Desktop models



1
Unfasten the four chrome fasteners and open up the lightbox.



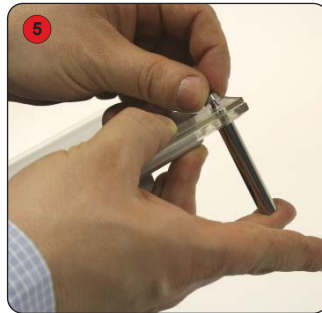
2
Remove the protective covering from the front acrylic sheet.



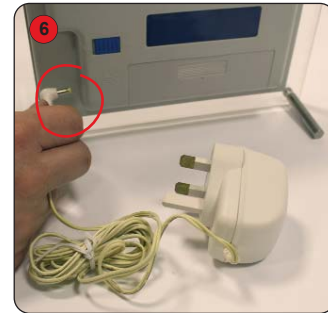
3
Position the graphic centrally onto the rear acrylic sheet.



4
Cover the graphic with the front acrylic sheet.

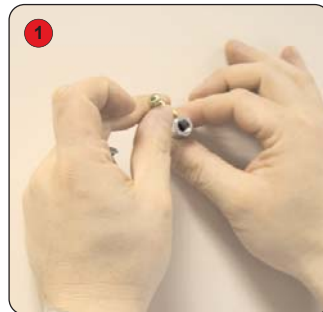


5
Fasten the acrylic sheets together using the chrome fasteners.



6
Attach the power supply adaptor to the lightbox and switch on ready for use.

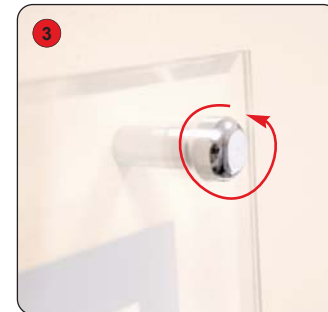
Wall mountable model



1
Fasten the chrome fastener standoff section to the wall. Note: Standoff hole dia 4mm (Wall fixings not supplied).

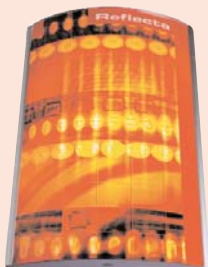


2
Sandwich the graphic between the front and rear acrylic sheets and align against the chrome fasteners.



3
Secure using the four chrome mounting screws.

Other products in our Reflecta range include:



Reflecta D

A high impact lightbox display solution, just add your own graphics. Spring loaded mechanism for easy change of graphics. Wall fixing, portrait or landscape



Mirage

A range of graphics pods and lightboxes, perfect for demonstration units or for instore displays and exhibitions.



Mirage Lite

Mirage Lite is a freestanding double sided light box. Elegant looks and ease of assembly make the Mirage Lite ideal for Retail or Display applications.